



© Live Ocean Charitable Trust | NZ Charity ID CC57006

Registered in the USA as a 501(c)(3) non-profit | Live Ocean Federal Tax ID 85-1066585

General Enquiries: hello@liveocean.com

Photo credit: Project Kahurangi



IMPACT REPORT 01 APRIL 2021 - 31 MARCH 2022

An aerial photograph of a coastline, showing a mix of green land and blue water. A light blue line, possibly a path or a boundary, runs diagonally across the land. The text is overlaid on the right side of the image.

**OUR DEEP CONNECTION
TO THE OCEAN DRIVES
OUR DESIRE TO CREATE
POSITIVE CHANGE**



Photo credit: Project Kahurangi

OUR VISION
A HEALTHY OCEAN
FOR A HEALTHY FUTURE

OUR MISSION
LIVE OCEAN FOUNDATION
PARTNERS WITH EXCEPTIONAL
NEW ZEALAND MARINE
SCIENTISTS, INNOVATORS
AND COMMUNICATORS TO
SCALE UP ACTION FOR A
HEALTHY OCEAN

A MESSAGE FROM OUR CHAIR

Tēnā koutou,

While there is broad understanding of the precariousness of our future, the role a healthy ocean plays still remains absent from our national discourse. This is despite Aotearoa's ocean space dwarfing our land area by more than 15 times. The ocean-climate nexus presents huge challenges, but with that comes great opportunity to shape a better future for us all.

At Live Ocean Foundation we are action orientated, and it's with delight that we can report the organisation grew steadily over the year with an 17.9% increase in fundraising income. Including Live Ocean USA, the revenue for FY 22 was \$1,300,425 with 74.8% of our expenditure directed to the science, innovation and public education we work with our partners to deliver.

The growth in funds was a significant accomplishment by the team in a difficult year with extended lockdowns and ongoing disruptions.

As well as bringing in important funding to accelerate the projects we support,

LIVE OCEAN HAS A KEY ROLE TO PLAY IN ADDRESSING THE ONGOING OCEAN BLINDNESS AND SHIFTING THE NARRATIVE FROM 'IT'S TOO HARD' TO 'IT'S TOO IMPORTANT NOT TO ACT NOW'.

Social licence is a critical factor in the movement needed to spark national focus. Our alignment with sport and this year's partnership with the New Zealand SailGP Team has allowed us to stretch our reach to new audiences and we're excited about the potential. It has also provided us with a valuable contribution to the work being done on kelp restoration which was greatly appreciated.

As always, we remain committed to good governance. Thank you to my fellow trustees Shelley Campbell and Jez Fanstone for your insights and focus. To our US Directors, Amanda Martin, Erin Miserlis and Jez Fanstone, we also thank you. To our founding partners, core supporters and trusted advisers, your efforts and support of the Live Ocean kaupapa is central to our ability to make a difference.

As always, our founders Peter Burling and Blair Tuke continue to inspire us with their belief we can be so much better, their energy, tenacity and most of all their love for the moana.

Ngā mihi nui,
MIRANDA BURDON



FROM OUR FOUNDERS

Kia ora Live Ocean whānau,

The opportunity to use our sport to connect audiences with the vision for a healthy ocean has been something we've always seen from the outset of Live Ocean. It was a huge year for us on the back of the America's Cup win, the Olympics and the launch of the New Zealand SailGP Team, where the foundation came on board as the charity partner. We've had incredible support from people all over the country, thank you.

The Spain Sail Grand Prix in October demonstrated when sport and conservation connect, it can provide a moment for focus and impact. We shared the story of the plight of Antipodean albatross and proudly displayed the image on the wing of the F50. The event itself provided a key moment as the governments of New Zealand and Spain announced a commitment to improve fishing practices to avoid the capture of

seabirds in southern fisheries. It was hugely rewarding to see this agreement come into place.

LATER IN MARCH, THE NEW ZEALAND SAILGP TEAM MADE HISTORY BY BECOMING THE FIRST WINNERS OF THE IMPACT LEAGUE.

The USD\$100,000 prize for Live Ocean Foundation will fund important work in the Hauraki Gulf into the significance of kelp forests and their regeneration.

We also had some epic missions to awesome parts of our country. It was special to head to Kawhia to meet with the Te Toki Waka Hourua whānau and to hear about the work they're doing to revitalise voyaging in Aotearoa and to learn more about their relationship to the ocean. We also headed up to

Northland to spend a night with Ngāti Kuri 4th Gen youth who are an inspiring group of rangatahi.

Heading out on the boat with Dr Nick Shears to Hauturu-o-toi Little Barrier, we saw first-hand healthy new kelp beds that only 12 months before were kina barrens. We need to keep charging, there is such a massive opportunity for recovery, and we can all be part of it.

Ngā mihi nui,
PETER BURLING + BLAIR TUKE



FROM OUR CEO

Tēnā koutou,

We're proud to present our second annual report, which reflects a huge amount of support, belief and mahi. For a young organisation we've made significant strides, entering our third year with our strategy tested and embedded. While the world has been grappling with the pandemic and its aftermath, the need to stay focused on the environment and the role the moana plays in that, is critical vital.

Key highlights from the year include

- 1] A vital second year of support of Dr Emma Carroll's southern right whale research.
- 2] Building our support to accelerate kelp restoration research & the role kelp plays in carbon sequestration.
- 3] Seascape has made great progress, with recognition of the methodology by the University of Auckland and surveying of critical seafloor habitats in the Hauraki Gulf.

4] Support of the voyage to the Antipodes Islands to preserve the near 30-year data set on the Antipodean albatross.

5] Developing new whanaungatanga, including with Te Toki Voyaging Trust who we are supporting for the next three years.

6] Established Project Kahurangi, an image and video bank for the conservation sector to enable more effective conservation messaging.

The central theme for the year is undoubtedly mahi tahi/collaboration, despite the barriers the extended lockdown created.

OUR PARTNERSHIPS WITH THE PEOPLE AND BUSINESSES WHO SUPPORT US AND THE SCIENTISTS, INNOVATORS AND COMMUNICATORS WE FUND ARE THE MAURI OF HOW WE WORK.

Now, with the partnership with the New Zealand SailGP Team, we can take these insights and the ambition for a healthy ocean to the world stage in a way that is unique to Aotearoa New Zealand. We engage widely with others in the conservation sector and create relationships and networks with ocean sports organisations.

A massive thank you for your manawanui support in a time where everyone was stretched, both in business and personally. Your unwavering commitment to us and a healthy ocean during difficult times will always be remembered. Together, we press forward to drive action for the ocean in the crucial window between now and 2030.

Thank you to our small (but mighty!) Live Ocean team for your dedication and good humour. In difficult circumstances you shone....

Ngā mihi nui,
SALLY PATERSON



THANK YOU

FOUNDING PARTNERS

AKO Foundation

FORSYTH BARR

BAYLEYS

WHAKATUPU
AOTEAROA FOUNDATION

MAJOR SUPPORTERS

APL
WINDOW SOLUTIONS

大成 DENTONS KENSINGTON SWAN

DOYLE

Generate

Joyce
Fisher
Charitable
Trust

ASHLEY & BEN
RENSHAW

SIR EION & LADY EDGAR
CHARITABLE TRUST

THE LOU & IRIS FISHER
CHARITABLE TRUST

THE MACE CHARITABLE
FOUNDATION

Despite the challenges 2021 presented, it was a year of rapid growth for Live Ocean. The support from our founding partners and major supporters has been unwavering. It has allowed us to create impact by partnering with exceptional local talent. Our whānau has continued to grow and we're thrilled to welcome passionate ocean lovers, APL and Doyle Sails into the fold.

The wider community of ocean champions have continued to come together around the ambition for a healthy ocean. The support and belief of many is what will move the needle at a national and global level. **Thank you to everyone who has gifted their time, expertise, proceeds or joined us in the conversation.**

An underwater photograph featuring a diver in a blue wetsuit swimming towards the right. A large, light-colored fish, possibly a shark, is swimming parallel to the diver on the right side of the frame. The water is dark blue, and many small, silvery fish are visible in the background. The text is overlaid on the left side of the image.

THE OCEAN IS OUR GREATEST
ALLY IN THE **FIGHT FOR A
HEALTHY PLANET.** BUT IT'S
AT A TIPPING POINT

TO HAVE A HEALTHY
FUTURE WE MUST HAVE
A HEALTHY OCEAN

SEASCAPE

Seascape is a public access geospatial marine modelling project produced by New Zealand Geographic with funding from Live Ocean Foundation.

Photo credit: Paul Caiger

Seascape technology allows access to high resolution, photo-realistic, three dimensional seafloor maps, hundreds of metres in area. These maps can be shared with international researchers, allowing them to understand the modelled underwater environment like they were there. Images can be used as baselines for other key scientific questions in the future, as well as a public education tool.

“Adapting photogrammetry technology for use underwater will give us the view of our marine habitats that satellite imagery provides on land. Our hope is that this insight leads to better decision making, more robust science, and a public more engaged in the fate of the marine space.”

JAMES FRANKHAM | NZ GEOGRAPHIC

6
MINUTES

The methodology can model 200m² of seafloor in six minutes to millimetre accuracy, building accurate, georeferenced photogram-metric models of our seafloor for both science and public outreach.

8K
METERS SQAURED

Over 2021-22 the Seascape programme mapped 8,000 m² of reefs, shellfish beds, estuaries, sponge gardens and seagrass.

1200
IMAGES

The largest single mosaic is made up of over 1200 images of a 145 m² scallop bed patch.

TE TOKI VOYAGING TRUST



Photo credit: Josh McCormack



The story of Aotearoa is intrinsically linked to the moana and the many wayfinders who voyaged across the ocean.

Knowledge and appreciation of our history is critical in rebuilding our connection with the moana. By learning about those who crossed the ocean before us we can restore and protect it for future generations.

We've teamed up with Te Toki Voyaging Trust (TTVT) to highlight traditional voyaging as a vehicle through which mātauranga (knowledge) can join with western science to create a culture of caring for the environment and sustaining people.

As part of this collaboration, Live Ocean Foundation is providing three years of capacity support. This enables TTVT to deliver more of their invaluable work with rangatahi and the wider community which carries respect for the marine environment at its core.

Arie Spyksma from New Zealand Geographic and photographer Richard Robinson joined them to capture high quality imagery to share the story of these curious travellers.

Whitu's tag has been transmitting his location for over 423 days and counting!

The team from NZ Geographic captured four underwater 360-degree virtual reality videos of the southern right whales. This footage is being used to connect people to tohorā through BLAKE's in-school program.

THE POWER OF SPORT



Shining a spotlight on the plight of the Antipodean albatross and working to stop their path to extinction has been a key part of Live Ocean Foundation's charity partnership with the New Zealand SailGP Team.

"This wouldn't have happened without the leadership and determination of Pete Burling and Blair Tuke who for the past two years have been championing the Antipodean Albatross alongside the New Zealand scientists, agencies and communities committed to saving them from freefall to extinction."

NIGEL FYFE - NEW ZEALAND AMBASSADOR TO SPAIN

GLOBAL PLATFORM

This video highlighting the threat to seabirds and calling for action in the SailGP global broadcast reached 3.7 million people in 175 territories.

USING OUR VOICE

Peter Burling and Blair Tuke spoke at the SailGP Champions For Change Event, alongside New Zealand's Ambassador to Spain Nigel Fyfe.

SPORT DIPLOMACY

Peter and Blair spoke with Spain's Secretary of State for Sport José Manuel Franco to discuss the role of sport in creating meaningful change.

ACTION

This action set the stage ahead of the signing of an agreement between Spain and New Zealand governments to boost protections for threatened seabirds in December 2021.



THE FIRST PODIUM FOR THE PLANET

2021 saw the first year of the SailGP Impact League – sport’s first podium for the planet. Throughout Season 2 teams competed for points by taking innovative action both on and off the water to reduce their environmental impact and raise awareness.

Thanks to their ongoing dedication, the New Zealand SailGP Team were crowned the Impact League winners at the Season 2 final in San Francisco. This win has supported meaningful impact on multiple levels.

SUPPORT

\$100,000 USD prize money supporting critical kelp regeneration work by the University of Auckland.

EXPOSURE

Media exposure to this critical issue and the power of sport to drive change.

CONNECTION

Connecting with the incredible Dr Sylvia Earle.

ACTION

Providing opportunities to activate this story throughout the following season as research progresses.

THE WIN

The prize money is being used to support research led by Dr Nick Shears and Dr Caitlin Blain from the University of Auckland, into the significance of kelp forests and their regeneration.

TREES OF THE SEA



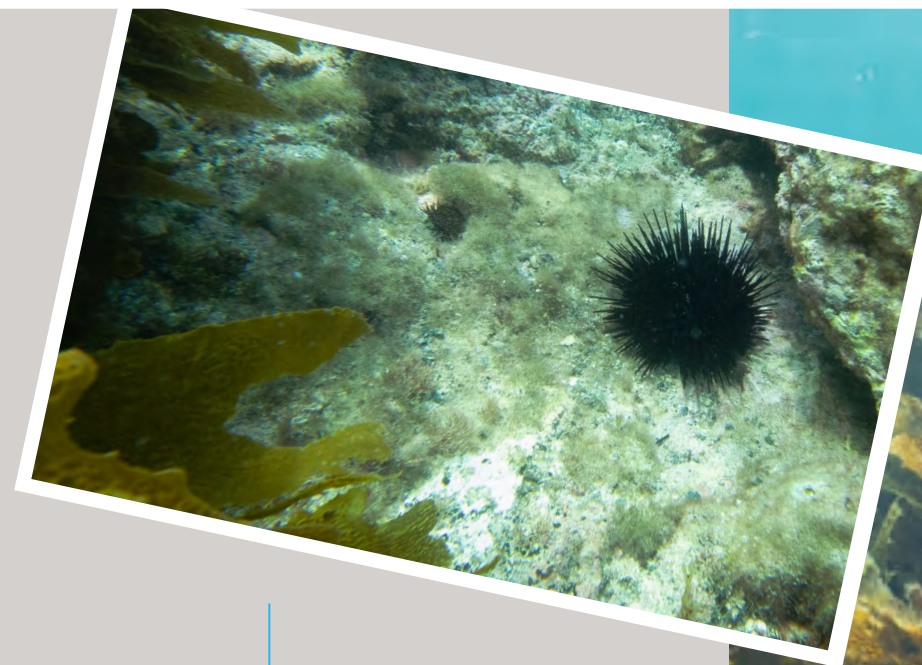
Photo credit: Project Kahurangi

Over 50% of the planet's oxygen comes from the ocean. Kelp forests are not only vital to the health of the ocean ecosystems, but to the planet as a whole.

Many vital marine habitats across the globe are experiencing a kelp forest decline, causing habitat and biodiversity loss.

Live Ocean Foundation is supporting work by Dr Nick Shears from the University of Auckland to understand both the scale of the problem and what happens when the kina are removed from barrens. Does 'resetting' the system accelerate the restoration of kelp on a large scale?

These findings could be very significant for new areas of marine protection, where kina removal could significantly accelerate habitat restoration.



50%
OXYGEN

50% of the planet's oxygen comes from the ocean.

50%
DESTROYED

Half of the kelp forest on shallow reefs around Hauturu-o-Toi Little Barrier Island are now kina barrens.

“Our research will examine the role of marine protection and restoration in allowing kelp forests to bloom, and their associated marine life to return and flourish.”

DR NICK SHEARS

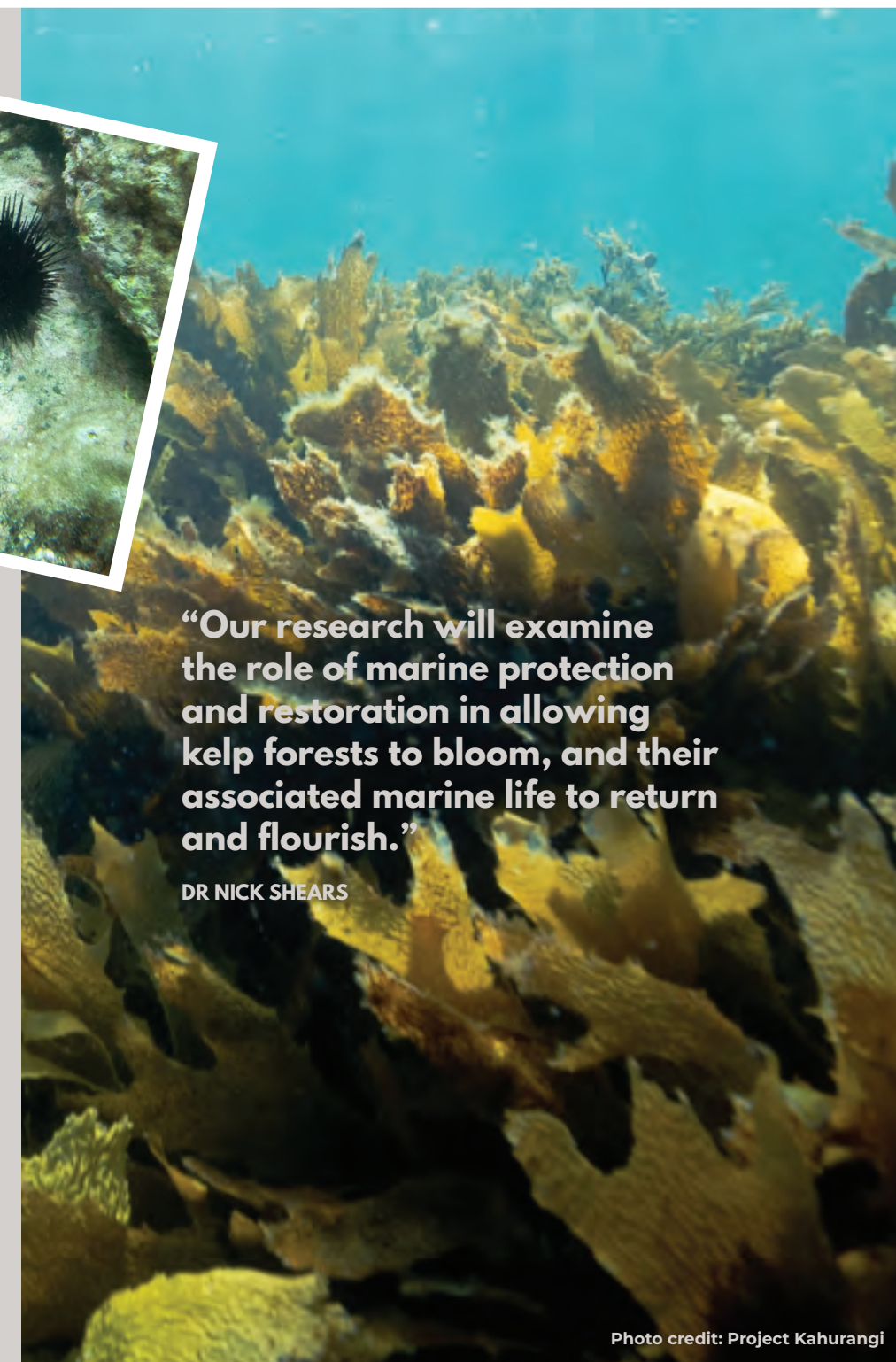


Photo credit: Project Kahurangi



KELP AND CARBON

“Our research has demonstrated that only a small proportion of this carbon is stored in kelp forests, with much of it being released back into the ocean. This research will help us understand the long-term fate of this “lost” carbon and the role of kelp forests in climate change mitigation.”

DR CAITLIN BLAIN

Live Ocean Foundation is supporting Dr Caitlin Blain from the University of Auckland to investigate how kelp forests contribute to coastal carbon cycles.

The work will help researchers understand the role of kelp forests in climate change mitigation and provides an exciting potential opportunity for quantifying and valuing blue carbon.

Kelp forests are highly productive and while they provide important stores of carbon, the long-term fate of the majority of carbon fixed (turned into organic compounds) by kelp is unknown.

This new research combines ecophysiology, chemistry and microbiology to advance our understanding of the importance of this ‘missing’ carbon in global carbon cycles and provide more realistic estimates of the contribution of kelp to blue carbon budgets.

Photo credit: Project Kahurangi



PROJECT KAHURANGI


The issues the ocean faces are largely out of sight. Below the waterline. It's harder to see and easier to ignore.

Photo credit: Project Kahurangi

MORE THAN 800 PHOTOS +200 VIDEOS

Imagery is vital for ocean conservation messaging to resonate. Project Kahurangi is a powerful resource, giving conservation groups across Aotearoa access to compelling local photos and videos.

With Live Ocean Foundation's support version one was made available to the sector in early 2022. User feedback has been collated and the finalised version of the library is due to launch in September 2022.



“Project Kahurangi will fill a significant gap, addressing of our science communication challenges and raising the bar for marine advocacy in New Zealand.”

PETER MILES - REVIVE OUR GULF

Photo credit: Project Kahurangi



THE NUMBERS

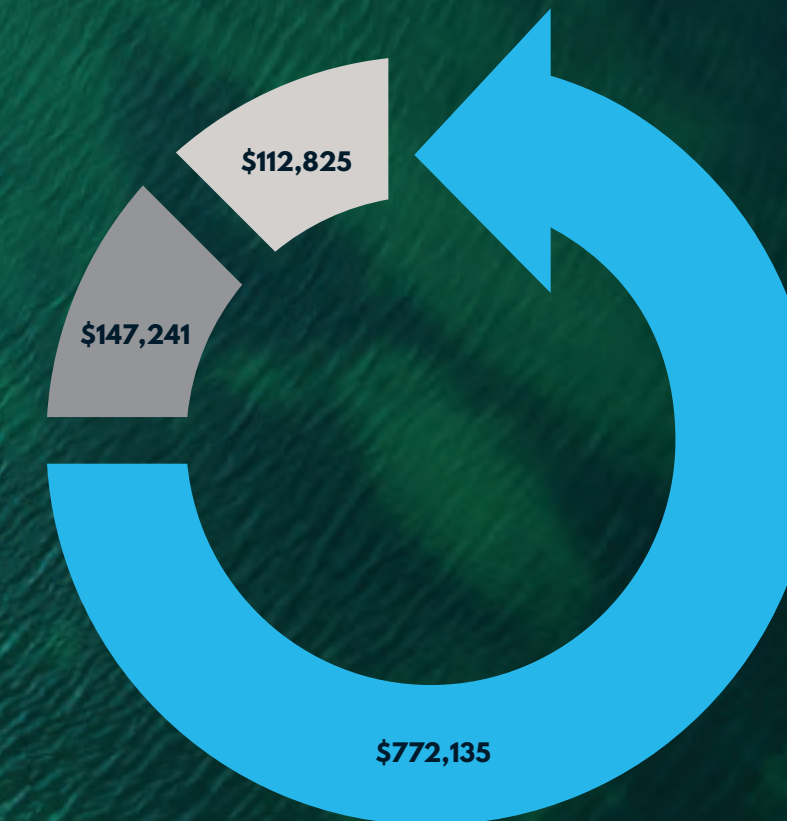
Photo credit: Project Kahurangi

CONSOLIDATED FINANCIALS 2021-22

	FY2021-22	FY2020-21
TOTAL REVENUE	\$ 1,300,425	\$ 1,102,770
EXPENSES:		
PROGRAMME	\$ 772,135	\$ 737,033
FUNDRAISING/MARKETING	\$ 147,241	\$ 116,884
ADMINISTRATION	\$ 112,825	\$ 130,844
TOTAL EXPENSES	\$ 1,032,201	\$ 984,761

TOTAL ASSETS	\$ 487,395	\$ 189,220
TOTAL LIABILITIES	\$ 67,859	\$ 38,073
NET ASSETS	\$ 419,537	\$ 151,147

Consolidated financials for Live Ocean (New Zealand) and Live Ocean (USA) for 1 April 2021 – 31 March 2022. Full audited financials for Live Ocean Charitable Trust Group (NZ) are available on our website. Live Ocean USA form 990s submitted to the US Internal Revenue Service.



PROGRAMMES 75%
FUNDRAISING/MARKETING 11%
ADMINISTRATION 14%